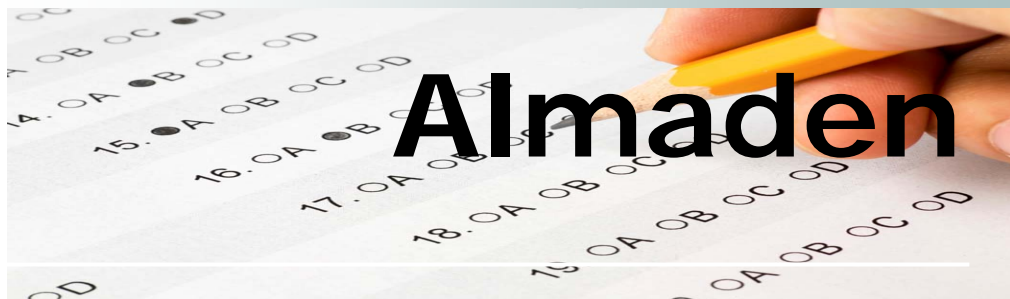


# School Accountability Report Card

2007-2008 Summary



**Grades K-5**  
**Enrique Pin, Principal**

1295 Dentwood Drive  
San José, CA 95118  
(408) 535-6207

This summary of the School Accountability Report Card (SARC) is intended to provide a quick snapshot of this school.

The data presented are reported for the 2007-2008 school year, except the School Finances that are reported for the 2006-07 school year.

Please refer to this school's full SARC for a detailed profile of this school and how it compares to the District and to the State.

<http://www.sjUSD.org>

## Enrollment and Class Size

Total Students	402
African American	2.49%
American Indian or Alaska Native	0.75%
Asian	3.23%
Filipino	1%
Hispanic or Latino	81.84%
Pacific Islander	%
White (Not Hispanic)	7.96%
Multiple or No Response	2.74%
Socioeconomically disadvantaged	84%
English Learners	76%
Students with disabilities	8%



Grade	Enrollment	Average Class Size
K	72	18.0
1	65	20.3
2	68	18.3
3	73	31.0
4	63	28.0
5	61	30.0

## Testing and Accountability

### California Standards Test

The California Standards Tests (CST) are a series of tests given to all students to determine how well they are performing in relation to the State content standards.

Percent of students scoring proficient and above	
English-Language Arts	28%
Mathematics	55%
Science	23%
Social Science	n/a

### Academic Performance Index

The Academic Performance Index (API) is an annual measure of the academic performance and progress of schools in California. API scores range from 20 to 1,000 with a statewide target of 800.

2008 API	733
Change from prior year	7
Met growth target	Yes
Statewide rank	4
Similar schools rank	8

### Annual Yearly Progress

The Federal No Child Left Behind (NCLB) program requires that all schools and districts meet Adequate Yearly Progress (AYP) targets.

Met AYP	No
Met English-Language Arts proficiency target	No
Met Mathematics proficiency target	Yes
Met API target	Yes
Met Graduation Rate target	n/a



## Teacher Qualifications

<b>Total teachers at this school</b>	<b>24</b>
Teachers with full credential	24
Teachers without full credential	0
Teachers teaching outside subject areas of competence	0
Teacher misassignments	0
Vacant teacher positions	0
Core classes taught by NCLB compliant teachers	95.0%

## Expenditures per Pupil and Teacher Salaries

- San José Unified's average expenditures per pupil are \$9,107.
- The average teacher's salary in San José Unified is \$65,633.

<b>Expenditures per pupil at this school</b>	<b>\$11,116</b>
Unrestricted (basic) expenditures per pupil	\$5,628
Restricted (supplemental) expenditures per pupil	\$5,487
Average teacher's salary at this school	\$64,286

## Facilities

Results of a facility inspection conducted on 9/18/08 rated this school's condition as  
**GOOD**

The current Almaden School site was opened in September 1974. The school's maintenance is done on a regular basis. There is one full-time day custodian and a crew of four one-hour night custodians. Almaden students and staff have a high regard for the appearance of the school and the beautiful murals that adorn the school. Student volunteers receive special recognition for

keeping the school campus clean. These combined efforts have resulted in a low incidence of vandalism. Almaden began upgrading the facility in the summer of 2001. Upgrades included new carpeting, heating, air conditioning units, a new roof, upgrading our electrical wiring. In the summer of 2006, work was done in the bathrooms, playing fields, and areas prone to flooding. In

the summer of 2007, a major renovation was done to the main media center building. Previously open-walled classrooms were enlarged and enclosed. Small Group Instruction workrooms were added, as well as fresh paint, new carpeting, new counters, and shelving.