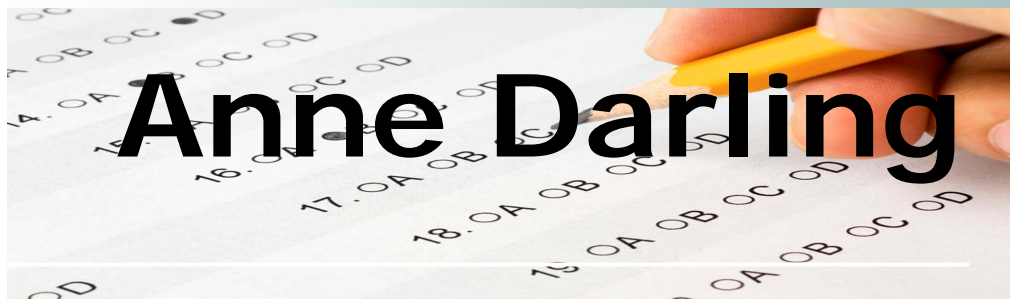


School Accountability Report Card

2007-2008 Summary



Anne Darling

Grades K-5

Patsy Storie, Principal

333 North 33rd Street
San José, CA 95133
(408) 535-6209

This summary of the School Accountability Report Card (SARC) is intended to provide a quick snapshot of this school.

The data presented are reported for the 2007-2008 school year, except the School Finances that are reported for the 2006-07 school year.

Please refer to this school's full SARC for a detailed profile of this school and how it compares to the District and to the State.

<http://www.sjUSD.org>

Enrollment and Class Size

Total Students	541
African American	0.18%
American Indian or Alaska Native	0.55%
Asian	4.62%
Filipino	0.37%
Hispanic or Latino	84.66%
Pacific Islander	0.18%
White (Not Hispanic)	7.95%
Multiple or No Response	1.48%
Socioeconomically disadvantaged	90%
English Learners	72%
Students with disabilities	8%



Grade	Enrollment	Average Class Size
K	84	21.0
1	92	19.3
2	99	20.0
3	77	24.5
4	99	24.3
5	90	30.3

Testing and Accountability

California Standards Test

The California Standards Tests (CST) are a series of tests given to all students to determine how well they are performing in relation to the State content standards.

Percent of students scoring proficient and above	
English-Language Arts	31%
Mathematics	38%
Science	37%
Social Science	n/a

Academic Performance Index

The Academic Performance Index (API) is an annual measure of the academic performance and progress of schools in California. API scores range from 20 to 1,000 with a statewide target of 800.

2008 API	694
Change from prior year	22
Met growth target	Yes
Statewide rank	2
Similar schools rank	1

Annual Yearly Progress

The Federal No Child Left Behind (NCLB) program requires that all schools and districts meet Adequate Yearly Progress (AYP) targets.

Met AYP	No
Met English-Language Arts proficiency target	No
Met Mathematics proficiency target	No
Met API target	Yes
Met Graduation Rate target	n/a



Teacher Qualifications

Total teachers at this school	30
Teachers with full credential	30
Teachers without full credential	0
Teachers teaching outside subject areas of competence	1
Teacher misassignments	0
Vacant teacher positions	0
Core classes taught by NCLB compliant teachers	95.7%

Expenditures per Pupil and Teacher Salaries

- San José Unified’s average expenditures per pupil are \$9,107.
- The average teacher’s salary in San José Unified is \$65,633.

Expenditures per pupil at this school	\$10,649
Unrestricted (basic) expenditures per pupil	\$5,654
Restricted (supplemental) expenditures per pupil	\$4,995
Average teacher’s salary at this school	\$67,641

Facilities

Results of a facility inspection conducted on 9/23/08 rated this school’s condition as **EXEMPLARY**

Anne Darling originally opened in 1930. The current site was constructed in 1972. The school is currently undergoing extensive renovation. New kindergarten buildings were completed the summer of 2006. Primary grade classrooms were reconfigured for the 2006-2007 school year. A new two-story classroom building and cafeteria were opened during the 2007-2008 school year. The new two-story classroom

building includes new student bathrooms. Primary bathrooms were also renovated as part of the site modernization during summer, 2008. An artificial turf athletic field and site landscaping were also part of this phase of the project .A new media center and administration building is scheduled for completion during the 2008-2009 school year. The existing admin building will be demolished and the area will

become a new blacktop area for foursquare, basketball and tetherball. The school has a full-time custodian. A night crew comes through daily to clean classrooms and a maintenance crew comes through to do the yard weekly.