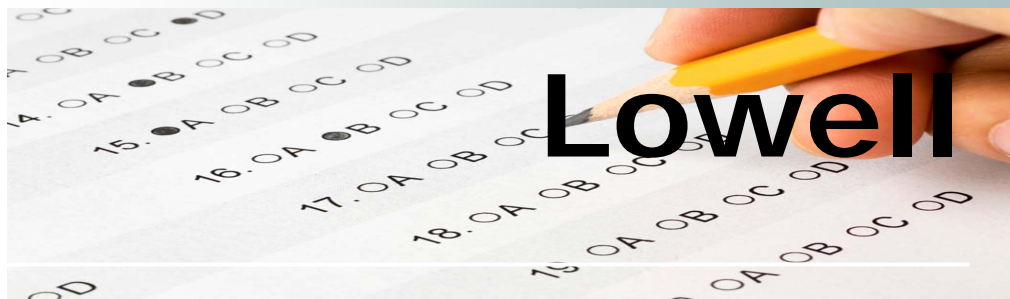


School Accountability Report Card

2007-2008 Summary



Lowell

Grades K-5

Jodi Lax, Principal

625 South 7th Street
San José, CA 95112
(408) 535-6243

This summary of the School Accountability Report Card (SARC) is intended to provide a quick snapshot of this school.

The data presented are reported for the 2007-2008 school year, except the School Finances that are reported for the 2006-07 school year.

Please refer to this school's full SARC for a detailed profile of this school and how it compares to the District and to the State.

<http://www.sjusd.org>

Enrollment and Class Size

Total Students	397
African American	2.27 %
American Indian or Alaska Native	%
Asian	9.07 %
Filipino	1.01 %
Hispanic or Latino	84.38 %
Pacific Islander	0.76 %
White (Not Hispanic)	1.76 %
Multiple or No Response	0.76 %
Socioeconomically disadvantaged	93 %
English Learners	79 %
Students with disabilities	11 %



Grade	Enrollment	Average Class Size
K	55	19.0
1	73	16.0
2	68	16.8
3	61	29.5
4	74	26.5
5	66	28.5

Testing and Accountability

California Standards Test

The California Standards Tests (CST) are a series of tests given to all students to determine how well they are performing in relation to the State content standards.

Percent of students scoring proficient and above	
English-Language Arts	39%
Mathematics	56%
Science	28%
Social Science	n/a

Academic Performance Index

The Academic Performance Index (API) is an annual measure of the academic performance and progress of schools in California. API scores range from 20 to 1,000 with a statewide target of 800.

2008 API	761
Change from prior year	59
Met growth target	Yes
Statewide rank	3
Similar schools rank	6

Annual Yearly Progress

The Federal No Child Left Behind (NCLB) program requires that all schools and districts meet Adequate Yearly Progress (AYP) targets.

Met AYP	Yes
Met English-Language Arts proficiency target	Yes
Met Mathematics proficiency target	Yes
Met API target	Yes
Met Graduation Rate target	n/a



Teacher Qualifications

Total teachers at this school	22
Teachers with full credential	20
Teachers without full credential	2
Teachers teaching outside subject areas of competence	1
Teacher misassignments	0
Vacant teacher positions	0
Core classes taught by NCLB compliant teachers	94.4%

- San José Unified’s average expenditures per pupil are \$9,107.
- The average teacher’s salary in San José Unified is \$65,633.

Expenditures per Pupil and Teacher Salaries

Expenditures per pupil at this school	\$10,009
Unrestricted (basic) expenditures per pupil	\$5,463
Restricted (supplemental) expenditures per pupil	\$4,546
Average teacher’s salary at this school	\$67,917

Results of a facility inspection conducted on 9/16/08 rated this school’s condition as **GOOD.**

Facilities

The present Lowell Elementary School building is 24 years old. There is a new two-story building with 15 classrooms that was completed in August of 2006. The main building was remodeled during the summer of 2007. The school facility is safe, clean and in adequate condition.