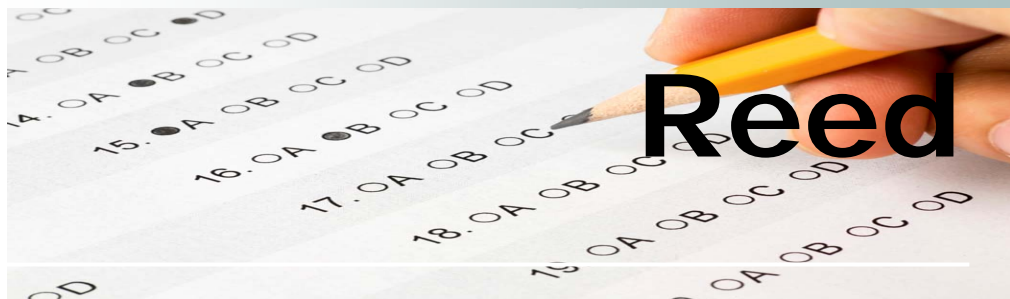


# School Accountability Report Card

2007-2008 Summary



**Grades K-5**  
**Bonnie Thurston, Principal**

1524 Jacob Avenue  
 San José, CA 95118  
 (408) 535-6247

This summary of the School Accountability Report Card (SARC) is intended to provide a quick snapshot of this school.

The data presented are reported for the 2007-2008 school year, except the School Finances that are reported for the 2006-07 school year.

Please refer to this school's full SARC for a detailed profile of this school and how it compares to the District and to the State.

<http://www.sjUSD.org>

## Enrollment and Class Size

<b>Total Students</b>	<b>451</b>
African American	2.88 %
American Indian or Alaska Native	0.44 %
Asian	9.53 %
Filipino	2.88 %
Hispanic or Latino	34.37 %
Pacific Islander	0.44 %
White (Not Hispanic)	47.89 %
Multiple or No Response	1.55 %
Socioeconomically disadvantaged	24 %
English Learners	10 %
Students with disabilities	14 %



Grade	Enrollment	Average Class Size
K	78	20.0
1	77	19.0
2	78	20.0
3	76	30.0
4	79	30.5
5	63	29.0

## Testing and Accountability

### California Standards Test

The California Standards Tests (CST) are a series of tests given to all students to determine how well they are performing in relation to the State content standards.

Percent of students scoring proficient and above	
English-Language Arts	62%
Mathematics	64%
Science	54%
Social Science	n/a

### Academic Performance Index

The Academic Performance Index (API) is an annual measure of the academic performance and progress of schools in California. API scores range from 20 to 1,000 with a statewide target of 800.

<b>2008 API</b>	<b>846</b>
Change from prior year	21
Met growth target	Yes
Statewide rank	8
Similar schools rank	2

### Annual Yearly Progress

The Federal No Child Left Behind (NCLB) program requires that all schools and districts meet Adequate Yearly Progress (AYP) targets.

<b>Met AYP</b>	<b>Yes</b>
Met English-Language Arts proficiency target	Yes
Met Mathematics proficiency target	Yes
Met API target	Yes
Met Graduation Rate target	n/a



## Teacher Qualifications

<b>Total teachers at this school</b>	<b>22</b>
Teachers with full credential	22
Teachers without full credential	0
Teachers teaching outside subject areas of competence	0
Teacher misassignments	0
Vacant teacher positions	0
Core classes taught by NCLB compliant teachers	95.2%

- San José Unified's average expenditures per pupil are \$9,107.
- The average teacher's salary in San José Unified is \$65,633.

## Expenditures per Pupil and Teacher Salaries

<b>Expenditures per pupil at this school</b>	<b>\$9,047</b>
Unrestricted (basic) expenditures per pupil	\$5,437
Restricted (supplemental) expenditures per pupil	\$3,912
Average teacher's salary at this school	\$68,809

Results of a facility inspection conducted on 9/15/08 rated this school's condition as **EXEMPLARY.**

## Facilities

Reed School was built in 1959. In 2006 all the blacktop area was resurfaced. The PTA and the District completed installation of our new playground equipment in 1997. The PTA bought additional new playground equipment in 2002 for 1st and 2nd grades, with plans to purchase more equipment to be used by upper graders. We received a grant from the City of San José in

2004 which was used to purchase playground and fitness equipment that is used by all students.

Many classrooms at Reed School were completely renovated during the summer of 2005 from funds generated by the Measure F bond. The office, cafeteria, rest rooms, and all classrooms received air conditioning, new flooring, new

furniture, and paint. The exterior of the school was also painted. The student and adult restrooms were remodeled in 2004. A full time custodian maintains the classrooms, restrooms, and grounds. A nightly cleaning crew vacuums and mops.

The school office benefited from Measure F bond in the summer of 2008 with the purchase of new office furniture.