

Summary

San José Unified School District

Of the
2008-2009
School Accountability
Report Card

Broadway

Published in 2009-2010

Grades 9-12
Stephanie Ogden, Principal
 4825 Speak Lane
 San José, CA 95118
 (408) 535-6285

This summary of the School Accountability Report Card (SARC) is intended to provide a quick snapshot of this school.

The data presented are reported for the 2008-2009 the School Finances that are reported for the 2007-2008 school year.

Please refer to this school's full SARC for a detailed profile of this school and how it compares to the District and to the State.

<http://www.sjUSD.org>

Enrollment and Class Size

Total Students	190
African American	1.58%
American Indian or Alaska Native	0.53%
Asian	1.58%
Filipino	0.53%
Hispanic or Latino	76.84%
Pacific Islander	2.11%
White (Not Hispanic)	15.79%
Multiple or No Response	1.05%
Socioeconomically disadvantaged	62.00%
English Learners	33.00%
Students with disabilities	10.00%



Grade	Enrollment	Subject	Avg. Class Size
9	3	English	11.6
10	15	Mathematics	12.5
11	56	Science	17.0
12	116	Social Science	13.9

Testing and Accountability

California Standards Test

The California Standards Tests (CST) are a series of tests given to all students to determine how well they are performing in relation to the State content standards.

Percent of students scoring proficient and above	
English-Language Arts	6%
Mathematics	29%
Science	9%
Social Science	6%

Academic Performance Index

The Academic Performance Index (API) is an annual measure of the academic performance and progress of schools in California. API scores range from 20 to 1,000 with a statewide target of 800.

2009 Growth API	520
Change from prior year	31
Met growth target	n/a
Statewide rank	n/a
Similar schools rank	n/a

Adequate Yearly Progress

The Federal No Child Left Behind (NCLB) program requires that all schools and districts meet Adequate Yearly Progress (AYP) targets.

Met Overall AYP	Yes
Met English Language Arts proficiency target	Yes
Met Mathematics proficiency target	Yes
Met API target of 620	Yes
Met Graduation Rate target	Yes



Teacher Qualifications

Total teachers at this school	14
Teachers with full credential	13
Teachers without full credential	1
Teachers teaching outside subject areas of competence	0
Teacher misassignments	0
Vacant teacher positions	0
Core classes taught by NCLB compliant teachers	81.5%

Expenditures per Pupil and Teacher Salaries

District Averages

- ◆ Expenditures per pupil are \$9,503.
- ◆ Average teacher's salary is \$69,741.

Expenditures per pupil at this school	\$17,104	79.99% higher than District Average
Unrestricted (basic) expenditures per pupil	10,362	
Restricted (supplemental) expenditures per pupil	\$6,742	
Average teacher's salary at this school	\$77,669	11.37% higher than District Average

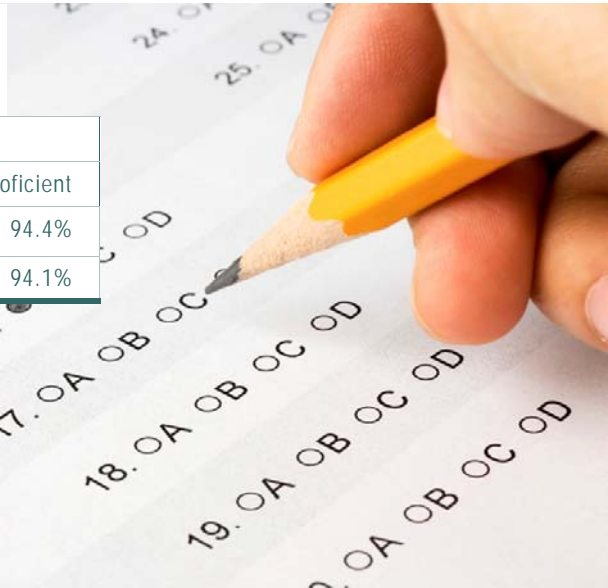
Facilities

Results of a facility inspection conducted on 8/27/09 rated this school's condition as **GOOD.**

In Broadway High School has been on its current site since April of 2000. There are 12 classrooms and three toddler infant rooms, providing services to 200+ students and up to 40 infants and toddlers, respectively. Physical Education classes utilize the adjoining fields for outdoor recreational purposes.

There are two sets of bathrooms for the students, which are fully operational and sanitary. The facility is clean, safe and well maintained by custodial and grounds personnel.

California High School Exit Exam



2008-2009 Grade 10 results			
	Advanced	Proficient	Not Proficient
All students English/Language Arts	0.0%	5.6%	94.4%
All student Mathematics	0.0%	5.9%	94.1%

The California High School Exit Examination (CAHSEE) is primarily used as a graduation requirement. However, the grade 10 results of this exam are also used to establish the percentages of students at three proficiency levels (not proficient, proficient, or advanced) in ELA and mathematics in order to compute Adequate Yearly

Progress (AYP) designations as required by the federal NCLB Act of 2001. Detailed information regarding CAHSEE results can be found at the CAHSEE Web site at <http://cahsee.cde.ca.gov/>.

Completion of High School Graduation Requirements

Graduating Class of 2009 at this school

All Students	23.4%
African American	n/a
American Indian or Alaska Native	n/a
Asian	n/a
Filipino	n/a
Hispanic or Latino	15.9%
Pacific Islander	n/a
White (not Hispanic)	40.7%
Socioeconomically Disadvantaged	20.0%
English Learners	n/a
Students with Disabilities	16.0%

Districtwide completion rate for the graduating class of 2009 was 70%.

Students in California public schools must pass both the English-language arts and mathematics portions of the California High School Exit Examination (CAHSEE) to receive a high school diploma. For students who began the 2008-09 school year in grade 12, as evidenced by that school year's October CBEDS enrollment, this table displays by student group the percent who met all state and local graduation requirements for grade 12 completion, including having passed both portions of the CAHSEE or received a local waiver or state exemption.

n/a means that the student group is not numerically significant (less than 10).

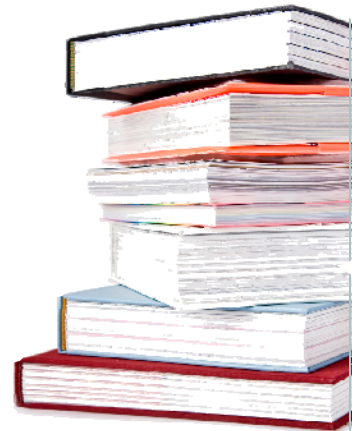
Program Improvement

Indicator	School	District
Program Improvement Status	Not in PI	In PI
First Year of Program Improvement Implementation		2009-2010
Year in Program Improvement		Year 1
Number of Schools Currently in Program Improvement		11
Percent of Schools Currently in Program Improvement		21.2%
Detailed information about PI identification can be found at the CDE AYP Web page at http://www.cde.ca.gov/ta/ac/ay/ .		

Schools and districts receiving federal Title I funding enter Program Improvement (PI) if they do not make AYP for two consecutive years in the same content area (English-language arts or mathematics) or on the same indicator (API or graduation rate). After entering PI, schools and districts advance to the next level of intervention with each additional year that they do not make AYP.

Textbooks

Broadway updates and purchases textbooks for all core classes according to the State adoption criteria and guidelines.



A list of textbooks and adoption dates is available at:
http://www.sjUSD.org/schools/documentation/downloads/Textbook_listing.pdf



San José Unified School District

855 Lenzén Avenue
 San José, CA 95126
 (408) 535-6000

*School Accountability Report Cards
 Prepared by*

*San José Unified School District's Office of Public Engagement
 (408) 535-6650*

Please refer to this school's full-length SARC report at <http://www.sjUSD.org> for detailed information.