

# Summary

Of the  
**2008-2009**  
**School Accountability**  
**Report Card**

Published in 2009-2010

# San José Unified School District Alternative High School **Gunderson Plus**

**Grades 11-12**  
**Dane Caldwell-Holden, Principal**  
 622 Gaundabert Lane  
 San José, CA 95136  
 (408) 972-8629

This summary of the School Accountability Report Card (SARC) is intended to provide a quick snapshot of this school.

The data presented are reported for the 2008-2009 school year, except the School Finances that are reported for the 2007-2008 school year.

Please refer to this school's full SARC for a detailed profile of this school and how it compares to the District and to the State.

<http://www.sjUSD.org>

## Enrollment and Class Size

Total Students	40
African American	12.50 %
American Indian or Alaska Native	%
Asian	5.00 %
Filipino	%
Hispanic or Latino	65.00 %
Pacific Islander	2.50 %
White (Not Hispanic)	10.00 %
Multiple or No Response	5.00 %
Socioeconomically disadvantaged	40.00 %
English Learners	10.00 %
Students with disabilities	%



Grade	Enrollment	Subject	Avg. Class Size
11	10		
12	30		
		English	20.0
		Mathematics	10.5
		Science	20.0
		Social Science	12.4

All Plus Schools are limited to an enrollment of 40 students. The Plus Program at Gunderson uses 2 classrooms with a student/teacher ratio of 20:1. The table above shows the number of students by subject area.

## Testing and Accountability

### California Standards Test

The California Standards Tests (CST) are a series of tests given to all students to determine how well they are performing in relation to the State content standards.

Percent of students scoring proficient and above	
English-Language Arts	0%
Mathematics	0%
Science	0%
Social Science	9%

### Academic Performance Index

The Academic Performance Index (API) is an annual measure of the academic performance and progress of schools in California. API scores range from 20 to 1,000 with a statewide target of 800.

2009 Growth API	n/a
Change from prior year	B
B" means this is an Alternative Schools Accountability Model (ASAM) school. Schools participating in the ASAM do not receive growth, target information, or statewide or similar schools rankings on this report in recognition of their markedly different educational missions and populations served.	

### Adequate Yearly Progress

The Federal No Child Left Behind (NCLB) program requires that all schools and districts meet Adequate Yearly Progress (AYP) targets.

Met Overall AYP	Yes
Met English-Language Arts proficiency target	Yes
Met Mathematics proficiency target	Yes
Met API target	Yes
Met Graduation Rate target	Yes



## Teacher Qualifications

<b>Total teachers at this school</b>	<b>3</b>
Teachers with full credential	3
Teachers without full credential	0
Teachers teaching outside subject areas of competence	0
Teacher misassignments	0
Vacant teacher positions	0
Core classes taught by NCLB compliant teachers	100.0%

## Expenditures per Pupil and Teacher Salaries

### District Averages

- ◆ Expenditures per pupil are \$9,503.
- ◆ Average teacher's salary is \$69,741.

<b>Expenditures per pupil at this school</b>	<b>\$9,570</b>	0.71% higher than District Average
Unrestricted (basic) expenditures per pupil	\$7,673	
Restricted (supplemental) expenditures per pupil	\$1,898	
Average teacher's salary at this school	\$62,193	10.82% lower than District Average

## Facilities

Results of a facility inspection conducted on 7/23/09 rated the classrooms used by this school as **EXEMPLARY.**

Gunderson Plus is part of the Gunderson campus. Gunderson was built in 1975. It is designed to accommodate 1500 students. The Kelar energy management and security system was installed in 1994. Three years later, during the 1997-98 school year, the Olympic-size swimming pool was upgraded, and Gunderson's lighting system was modernized to improve efficiency and decrease waste. During the summer of 1998, heating, ventilation, and air-conditioning systems were upgraded. Two new science labs were built in the fall of 1998 and 1999, and a new science classroom was completed in January 2001. In addition, a new 15-classroom building was built to

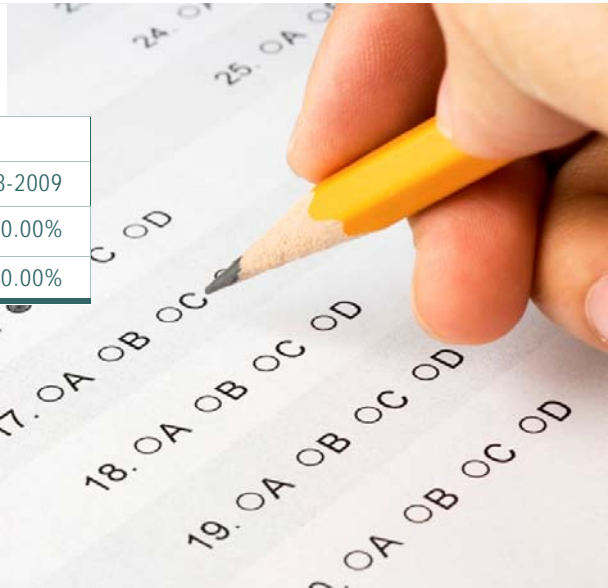
replace old portables. The completion of this construction was December 2006, with teachers moving into the new classrooms in February 2007. A new electronic marquee was installed in the spring of 2008. Gunderson has also recently had renovations to its softball and baseball fields (i.e. new grass, irrigation, lighting, backstops, and dug-outs). The entire complex of fields will be fenced to insure unauthorized use. Finally, older portables were demolished and the tennis courts were resurfaced in the summer of 2007.

Over the course of the 2008-2009 school year, Gunderson's science wing was being modernized. In addition, the kitchen has

been remodeled into a food court. The carpet in the forum was replaced with a painted concrete, and includes the Gunderson logo. Sound tiles and baffles were added to the walls and ceiling to assist with the absorption of noise. The gym has also had old sound panels replaced as well as a new scoreboard installed. This work was completed in the summer of 2009.

Gunderson's school grounds and facilities are considered safe, adequate, and clean. Five custodians and one groundskeeper are responsible for maintenance of all facilities and fields. Classrooms are cleaned regularly, while bathrooms are cleaned and stocked at least twice a day.

## California High School Exit Exam



	2006-2007	2007-2008	2008-2009
All students English/Language Arts	100.00%	100.00%	100.00%
All student Mathematics	70.00%	81.82%	100.00%

The California High School Exit Examination (CAHSEE) is primarily used as a graduation requirement. However, the grade 10 results of this exam are also used to establish the percentages of students at three proficiency levels (not proficient, proficient, or advanced) in ELA and mathematics in order to compute Adequate Yearly

Progress (AYP) designations as required by the federal NCLB Act of 2001. Detailed information regarding CAHSEE results can be found at the CAHSEE Web site at <http://cahsee.cde.ca.gov/>.

## Completion of High School Graduation Requirements

All Students	93.3%
African American	n/a
American Indian or Alaska Native	n/a
Asian	n/a
Filipino	n/a
Hispanic or Latino	89.5%
Pacific Islander	n/a
White (not Hispanic)	n/a
Socioeconomically Disadvantaged	94.4%
English Learners	n/a
Students with Disabilities	n/a

*n/a means that the student group is not numerically significant (less than 10).*