

# Summary

Of the  
**2008-2009**  
**School Accountability**  
**Report Card**

Published in 2009-2010

# San José Unified School District Alternative High School **Leland Plus**

**Grades 11-12**  
**Dane Caldwell-Holden, Principal**  
 6677 Camden Avenue  
 San Jose, CA 95120  
 (408) 535-6100

This summary of the School Accountability Report Card (SARC) is intended to provide a quick snapshot of this school.

The data presented are reported for the 2008-2009 school year, except the School Finances that are reported for the 2007-2008 school year.

Please refer to this school's full SARC for a detailed profile of this school and how it compares to the District and to the State.

<http://www.sjUSD.org>

## Enrollment and Class Size

| Total Students                   | 39     |
|----------------------------------|--------|
| African American                 | %      |
| American Indian or Alaska Native | %      |
| Asian                            | 7.69 % |
| Filipino                         | 2.56 % |
| Hispanic or Latino               | 48.72  |
| Pacific Islander                 | %      |
| White (Not Hispanic)             | 41.03  |
| Multiple or No Response          | %      |
| Socioeconomically disadvantaged  | 24.00  |
| English Learners                 | 18.00  |
| Students with disabilities       | 6.00 % |



| Grade | Enrollment | Subject        | Avg. Class Size |
|-------|------------|----------------|-----------------|
| 11    | 17         | English        | 8.2             |
| 12    | 22         | Mathematics    | 9.5             |
|       |            | Science        | 20.0            |
|       |            | Social Science | 8.2             |

All Plus Schools are limited to an enrollment of 40 students. The Plus Program at Leland uses 2 classrooms with a student/teacher ratio of 20:1. The table above shows the number of students by subject area.

## Testing and Accountability

### California Standards Test

The California Standards Tests (CST) are a series of tests given to all students to determine how well they are performing in relation to the State content standards.

| Percent of students scoring proficient and above |     |
|--|-----|
| English-Language Arts                            | 18% |
| Mathematics                                      | 6%  |
| Science  | 0%  |
| Social Science                                   | 35% |

### Academic Performance Index

The Academic Performance Index (API) is an annual measure of the academic performance and progress of schools in California. API scores range from 20 to 1,000 with a statewide target of 800.

|  |     |
|--|-----|
| 2009 Growth API  | 665 |
| Change from prior year   | B   |
| <p>B" means this an Alternative Schools Accountability Model (ASAM) school. Schools participating in the ASAM do not receive growth, target information, or statewide or similar schools rankings on this report in recognition of their markedly different educational missions and populations served.</p> |     |

### Adequate Yearly Progress

The Federal No Child Left Behind (NCLB) program requires that all schools and districts meet Adequate Yearly Progress (AYP) targets.

|  |     |
|--|-----|
| Met Overall AYP                              | No  |
| Met English-Language Arts proficiency target | Yes |
| Met Mathematics proficiency target           | No  |
| Met API target of 620                        | Yes |
| Met Graduation Rate target                   | Yes |



## Teacher Qualifications

|   |          |
|---|----------|
| <b>Total teachers at this school</b>                  | <b>3</b> |
| Teachers with full credential                         | 3        |
| Teachers without full credential                      | 0        |
| Teachers teaching outside subject areas of competence | 0        |
| Teacher misassignments                                | 0        |
| Vacant teacher positions                              | 0        |
| Core classes taught by NCLB compliant teachers        | 100.0%   |

## Expenditures per Pupil and Teacher Salaries

### District Averages

- ◆ Expenditures per pupil are \$9,503.
- ◆ Average teacher's salary is \$69,741.

|  |                 |                                    |
|--|-----------------|------------------------------------|
| <b>Expenditures per pupil at this school</b>     | <b>\$10,435</b> | 9.81% higher than District Average |
| Unrestricted (basic) expenditures per pupil      | \$8,421         |                                    |
| Restricted (supplemental) expenditures per pupil | \$2,014         |                                    |
| Average teacher's salary at this school          | \$64,804        | 7.08% lower than District Average  |

## Facilities

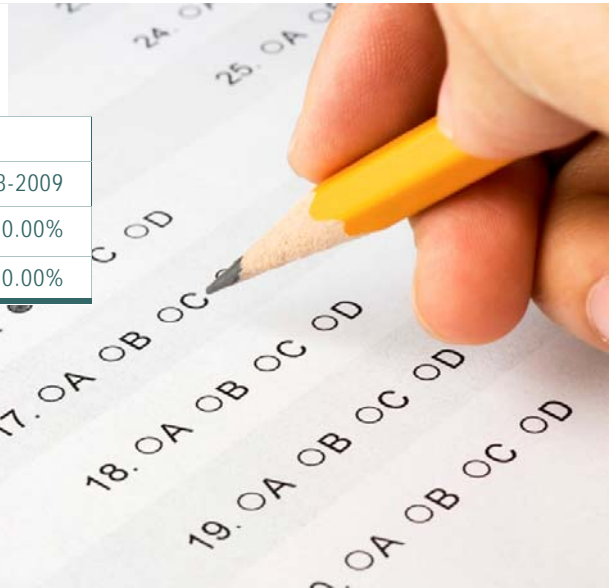
Results of a facility inspection conducted on 7/28/09 rated this school's condition as **GOOD.**

Leland Plus is part of the Leland Campus. Leland High School was constructed in 1967. Beginning in the summer of 2001, Leland received \$8,000,000 through Measure C Bond Funds for modernization, including new heating, air conditioning, roof, and electrical infrastructure. The Leland Foundation raised \$1,600,000 for additional reconstruction of the Media Center and upgrading

technology infrastructure. Additional improvement for science classrooms, athletic fields, and the technology wing will begin in 2006 through Measure F Bond funds. Summer of 2008, Leland completed the major modernization of 8 science classrooms, the kitchen and a new food court, the administration office, the sports complex of fields and the

construction of a concession building. Addition of Field lights were included and used during the 2008/2009 Football, Field Hockey and Soccer seasons. The installation of Solar Panels in the parking lots, were completed and became operational at the start of the 2008/09 school year. During the summer of 2009, the parking lots, access road and back basket court area were repaved.

## California High School Exit Exam



|                                    | 2006-2007 | 2007-2008 | 2008-2009 |
|------------------------------------|-----------|-----------|-----------|
| All students English/Language Arts | 80.00%    | 100.00%   | 40.00%    |
| All student Mathematics            | 62.50%    | 66.67%    | 100.00%   |

The California High School Exit Examination (CAHSEE) is primarily used as a graduation requirement. However, the grade 10 results of this exam are also used to establish the percentages of students at three proficiency levels (not proficient, proficient, or advanced) in ELA and mathematics in order to compute Adequate Yearly

Progress (AYP) designations as required by the federal NCLB Act of 2001. Detailed information regarding CAHSEE results can be found at the CAHSEE Web site at <http://cahsee.cde.ca.gov/>.

## Completion of High School Graduation Requirements

### Graduating Class of 2009 at this school

|                                  |       |
|----------------------------------|-------|
| All Students                     | 86.4% |
| African American                 | n/a   |
| American Indian or Alaska Native | n/a   |
| Asian                            | n/a   |
| Filipino                         | n/a   |
| Hispanic or Latino               | 80.0% |
| Pacific Islander                 | n/a   |
| White (not Hispanic)             | n/a   |
| Socioeconomically Disadvantaged  | n/a   |
| English Learners                 | n/a   |
| Students with Disabilities       | n/a   |

Districtwide completion rate for the graduating class of 2009 was 70%.

Students in California public schools must pass both the English-language arts and mathematics portions of the California High School Exit Examination (CAHSEE) to receive a high school diploma. For students who began the 2008-09 school year in grade 12, as evidenced by that school year's October CBEDS enrollment, this table displays by student group the percent who met all state and local graduation requirements for grade 12 completion, including having passed both portions of the CAHSEE or received a local waiver or state exemption.

*n/a means that the student group is not numerically significant (less than 10).*

## Program Improvement

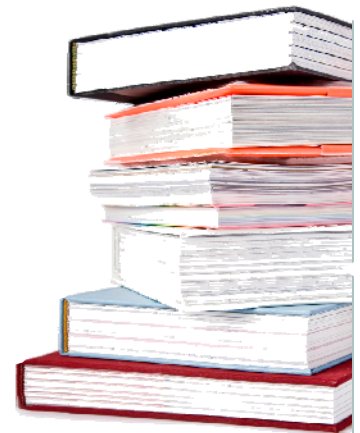
| Indicator  | School    | District  |
|--|-----------|-----------|
| Program Improvement Status   | Not in PI | In PI     |
| First Year of Program Improvement Implementation   |           | 2009-2010 |
| Year in Program Improvement  |           | Year 1    |
| Number of Schools Currently in Program Improvement   |           | 11        |
| Percent of Schools Currently in Program Improvement  |           | 21.2%     |
| Detailed information about PI identification can be found at the CDE AYP Web page at <a href="http://www.cde.ca.gov/ta/ac/ayl">http://www.cde.ca.gov/ta/ac/ayl</a> . |           |           |

Schools and districts receiving federal Title I funding enter Program Improvement (PI) if they do not make AYP for two consecutive years in the same content area (English-language arts or mathematics) or on the same indicator (API or graduation rate). After entering PI, schools and districts advance to the next level of intervention with each additional year that they do not make AYP.

## Textbooks

New textbooks are selected from State approved lists that have been piloted by all grade levels throughout the District. All students have access to textbooks and supplementary text materials for class and/or home use in order to complete assigned projects.

A list of textbooks and adoption dates is available at:  
[http://www.sjUSD.org/schools/documentation/downloads/Textbook\\_listing.pdf](http://www.sjUSD.org/schools/documentation/downloads/Textbook_listing.pdf)



*San José Unified School District*

855 Lenzen Avenue  
 San José, CA 95126  
 (408) 535-6000

*School Accountability Report Cards*

*Prepared by*

*San José Unified School District's Office of Public Engagement*

*(408) 535-6650*

Please refer to this school's full-length SARC report at <http://www.sjUSD.org> for detailed information.