

Summary

San José Unified School District

Of the
2008-2009
School Accountability
Report Card

Liberty

Published in 2009-2010

Grades 6-12
Dane Caldwell-Holden, Principal
 5845 Allen Avenue
 San Jose, CA 95116
 (408) 229-0722

This summary of the School Accountability Report Card (SARC) is intended to provide a quick snapshot of this school.

The data presented are reported for the 2008-2009 school year, except the School Finances that are reported for the 2007-2008 school year.

Please refer to this school's full SARC for a detailed profile of this school and how it compares to the District and to the State.

<http://www.sjUSD.org>

Enrollment and Class Size

Total Students	348
African American	4.31 %
American Indian or Alaska Native	0.86 %
Asian	3.45 %
Filipino	0.57 %
Hispanic or Latino	70.11 %
Pacific Islander	1.15 %
White (Not Hispanic)	18.97 %
Multiple or No Response	0.57 %
Socioeconomically disadvantaged	44.00 %
English Learners	20.00 %
Students with disabilities	6.00 %



Grade	Enrollment	Subject	Avg. Class Size
6	0	English	15.4
7	1		
8	2		
9	11		
10	40		
11	97	Mathematics	5.9
12	197	Science	12.4
		22.0	5.3

Testing and Accountability

California Standards Test

The California Standards Tests (CST) are a series of tests given to all students to determine how well they are performing in relation to the State content standards.

Percent of students scoring proficient and above	
English-Language Arts	14%
Mathematics	3%
Science	24%
Social Science	11%

Academic Performance Index

The Academic Performance Index (API) is an annual measure of the academic performance and progress of schools in California. API scores range from 20 to 1,000 with a statewide target of 800.

2009 Growth API	542
Change from prior year	59
Met growth target	n/a
Statewide rank	n/a
Similar schools rank	n/a

Adequate Yearly Progress

The Federal No Child Left Behind (NCLB) program requires that all schools and districts meet Adequate Yearly Progress (AYP) targets.

Met Overall AYP	No
Met English-Language Arts proficiency target	Yes
Met Mathematics proficiency target	No
Met API target	No
Met Graduation Rate target	Yes



Teacher Qualifications

Total teachers at this school	12
Teachers with full credential	12
Teachers without full credential	0
Teachers teaching outside subject areas of competence	0
Teacher misassignments	0
Vacant teacher positions	0
Core classes taught by NCLB compliant teachers	100.0%

Expenditures per Pupil and Teacher Salaries

District Averages

- ◆ Expenditures per pupil are \$9,503.
- ◆ Average teacher's salary is \$69,741.

Expenditures per pupil at this school	\$8,513	10.42% lower than District Average
Unrestricted (basic) expenditures per pupil	\$6,206	
Restricted (supplemental) expenditures per pupil	\$2,308	
Average teacher's salary at this school	\$79,774	14.39% higher than District Average

Facilities and Program Description

Results of a facility inspection conducted on 9/4/09 rated this school's condition as **GOOD.**

The Liberty High and Middle School Program allows students to receive their middle and high school education through an individualized independent study program. Working once a week 1:1 with a certificated instructor, each student will work through a selection of coursework that is designed to strengthen learning and work towards graduation.

While the alternative graduation plan requires the same number of credits, not all classes offered are UC/CSU approved. Many four-year universities will not accept an alternative student as a freshman. However, a successful community college student may transfer to almost any university.

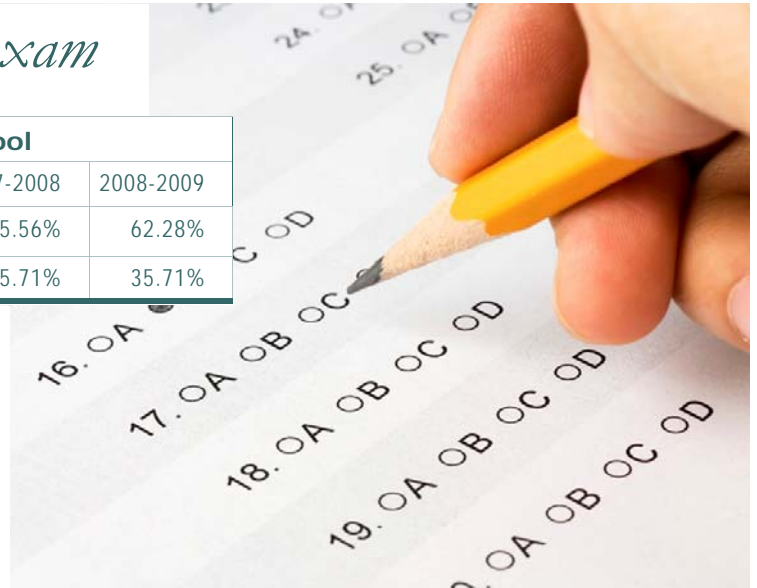
Student placement in Independent study is re-evaluated on a yearly basis and all students are encouraged to return to their home school or suitable alternative. All placements in Liberty High and Middle School are made by San Jose Unified Student Services Department

California High School Exit Exam

3 Year Comparison of Passing Rates at this School			
	2006-2007	2007-2008	2008-2009
All students English/Language Arts	48.84%	55.56%	62.28%
All student Mathematics	35.63%	35.71%	35.71%

The California High School Exit Examination (CAHSEE) is primarily used as a graduation requirement. However, the grade 10 results of this exam are also used to establish the percentages of students at three proficiency levels (not proficient, proficient, or advanced) in ELA and mathematics in order to compute Adequate Yearly

Progress (AYP) designations as required by the federal NCLB Act of 2001. Detailed information regarding CAHSEE results can be found at the CAHSEE Web site at <http://cahsee.cde.ca.gov/>.



Completion of High School Graduation Requirements

Graduating Class of 2009 at this school

All Students	33.5%
African American	50.0%
American Indian or Alaska Native	n/a
Asian	n/a
Filipino	n/a
Hispanic or Latino	27.5%
Pacific Islander	n/a
White (not Hispanic)	47.8%
Socioeconomically Disadvantaged	41.5%
English Learners	19.6%
Students with Disabilities	41.7%

Districtwide completion rate for the graduating class of 2009 was 70%.

Students in California public schools must pass both the English-language arts and mathematics portions of the California High School Exit Examination (CAHSEE) to receive a high school diploma. For students who began the 2008-09 school year in grade 12, as evidenced by that school year's October CBEDS enrollment, this table displays by student group the percent who met all state and local graduation requirements for grade 12 completion, including having passed both portions of the CAHSEE or received a local waiver or state exemption.

n/a means that the student group is not numerically significant (less than 10).

Program Improvement

Indicator	School	District
Program Improvement Status	Not in PI	In PI
First Year of Program Improvement Implementation		2009-2010
Year in Program Improvement		Year 1
Number of Schools Currently in Program Improvement		11
Percent of Schools Currently in Program Improvement		21.2%
Detailed information about PI identification can be found at the CDE AYP Web page at http://www.cde.ca.gov/ta/ac/ay/ .		

Schools and districts receiving federal Title I funding enter Program Improvement (PI) if they do not make AYP for two consecutive years in the same content area (English-language arts or mathematics) or on the same indicator (API or graduation rate). After entering PI, schools and districts advance to the next level of intervention with each additional year that they do not make AYP.

Textbooks

New textbooks are selected from State approved lists that have been piloted by all grade levels throughout the District. All students have access to textbooks and supplementary text materials for class and/or home use in order to complete assigned projects.

A list of textbooks and adoption dates is available at:

http://www.sjUSD.org/schools/documentation/downloads/Textbook_listing.pdf



San José Unified School District

855 Lenzén Avenue
San José, CA 95126
(408) 535-6000

*School Accountability Report Cards
Prepared by*

*San José Unified School District's Office of Public Engagement
(408) 535-6650*

Please refer to this school's full-length SARC report at <http://www.sjUSD.org> for detailed information.