

Summary

Of the
2008-2009
School Accountability
Report Card

Published in 2009-2010

San José Unified School District

Lincoln

Grades 9-12
Jackie Zeller, Principal
 555 Dana Avenue
 San José, CA 95126
 (408) 535-6300

This summary of the School Accountability Report Card (SARC) is intended to provide a quick snapshot of this school.

The data presented are reported for the 2008-2009 school year, except the School Finances that are reported for the 2007-2008 school year.

Please refer to this school's full SARC for a detailed profile of this school and how it compares to the District and to the State.

<http://www.sjUSD.org>

Enrollment and Class Size

Total Students	1,660
African American	4.16 %
American Indian or Alaska Native	0.96 %
Asian	5.72 %
Filipino	2.05 %
Hispanic or Latino	64.16 %
Pacific Islander	0.48 %
White (Not Hispanic)	21.63 %
Multiple or No Response	0.84 %
Socioeconomically disadvantaged	49.00 %
English Learners	19.00 %
Students with disabilities	9.00 %



Grade	Enrollment	Subject	Avg. Class Size
9	427	English	27.0
10	465	Mathematics	27.0
11	397	Science	28.7
12	371	Social Science	28.4

Testing and Accountability

California Standards Test

The California Standards Tests (CST) are a series of tests given to all students to determine how well they are performing in relation to the State content standards.

Percent of students scoring proficient and above	
English-Language Arts	50%
Mathematics	33%
Science	46%
Social Science	53%

Academic Performance Index

The Academic Performance Index (API) is an annual measure of the academic performance and progress of schools in California. API scores range from 20 to 1,000 with a statewide target of 800.

2009 Growth API	753
Change from prior year	30
Met growth target	Yes
Statewide rank	6
Similar schools rank	5

Adequate Yearly Progress

The Federal No Child Left Behind (NCLB) program requires that all schools and districts meet Adequate Yearly Progress (AYP) targets.

Met Overall AYP	No
Met English-Language Arts proficiency target	No
Met Mathematics proficiency target	No
Met API target of 620	Yes
Met Graduation Rate target	Yes



Teacher Qualifications

Total teachers at this school	76
Teachers with full credential	71
Teachers without full credential	5
Teachers teaching outside subject areas of competence	0
Teacher misassignments	0
Vacant teacher positions	0
Core classes taught by NCLB compliant teachers	99.4%

Expenditures per Pupil and Teacher Salaries

District Averages

- ◆ Expenditures per pupil are **\$9,503**.
- ◆ Average teacher's salary is **\$69,741**.

Expenditures per pupil at this school	\$9,529	0.27% higher than District Average
Unrestricted (basic) expenditures per pupil	\$5,730	
Restricted (supplemental) expenditures per pupil	\$3,800	
Average teacher's salary at this school	\$67,523	3.18% lower than District Average

Results of a facility inspection conducted on 7/31/2009 rated this school's condition as **GOOD.**

Facilities

Abraham Lincoln High School is 66 years old. In spring 2001, Lincoln completed our renovation from Measure C bond funds. All buildings on campus have gone through retrofitting, electrical upgrades, new AC/heating systems, and a variety of upgrades. Fifteen new portables have also been added to the campus to replace the old, dilapidated portables in our parking lot. The old boiler room has been transformed into a multi-purpose room specifically used for dance classes and musical theater rehearsals. Lincoln students take pride in their campus. We have won the San Jose Mercury News "Cleanest High School Campus Award" five times.

Through Measure F funds, Lincoln's Football stadium has been

completely renovated. An eight lane, all weather track was installed. Field Turf was installed and the football field was enlarged to allow soccer to be played. Visiting bleachers were installed along with a new sound system, scoreboard, and electronic timing system for track. The field renovation project was completed in November 2007 allowing student access in February 2008.

Lincoln's Black Box theatre underwent renovation in 2006 making the facility a stand-alone building. The renovation included the addition of a new lobby area, restroom facilities, and dressing room facility that was completed in the summer of 2006.

The school went through modernization during the spring and summer of 2006, which included

renovating our Art classrooms, the student restrooms and replacing all of our water fountains. A large shade structure was installed in the commons area in the summer of 2007 giving students an additional area of shelter.

The new science building was completed in the summer of 2008. This building provides LHS with four additional classrooms. During the summer of 2008 renovation and upgrades were completed on the existing science classrooms.

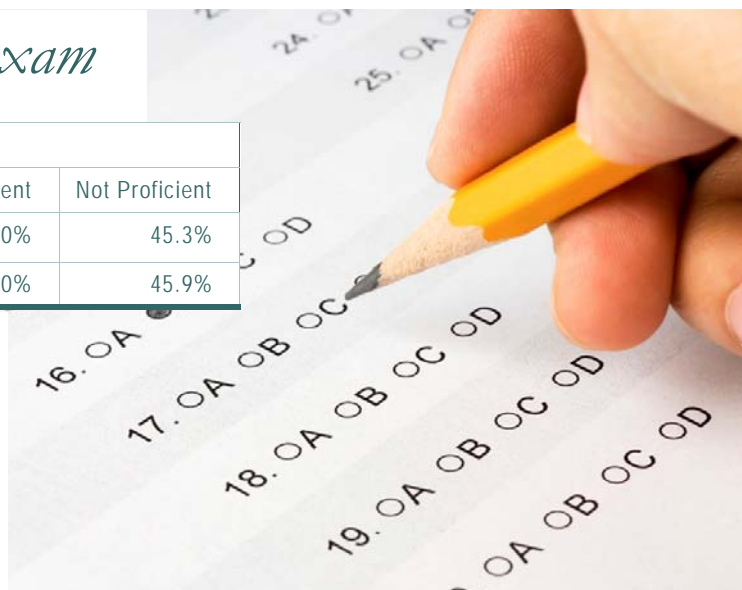
The majority of the school was painted in the summer of 2009. At the same time an evaluation of all roof conditions was conducted and any deficiencies were corrected.

California High School Exit Exam

2008-2009 Grade 10 results			
	Advanced	Proficient	Not Proficient
All students English/Language Arts	27.7%	27.0%	45.3%
All student Mathematics	19.1%	35.0%	45.9%

The California High School Exit Examination (CAHSEE) is primarily used as a graduation requirement. However, the grade 10 results of this exam are also used to establish the percentages of students at three proficiency levels (not proficient, proficient, or advanced) in ELA and mathematics in order to compute Adequate Yearly

Progress (AYP) designations as required by the federal NCLB Act of 2001. Detailed information regarding CAHSEE results can be found at the CAHSEE Web site at <http://cahsee.cde.ca.gov/>.



Completion of High School Graduation Requirements

Graduating Class of 2009 at this school

All Students	75.6%
African American	75.0%
American Indian or Alaska Native	n/a
Asian	93.8%
Filipino	n/a
Hispanic or Latino	69.3%
Pacific Islander	n/a
White (not Hispanic)	83.2%
Socioeconomically Disadvantaged	68.5%
English Learners	29.3%
Students with Disabilities	38.9%

Districtwide completion rate for the graduating class of 2009 was 70%.

Students in California public schools must pass both the English-language arts and mathematics portions of the California High School Exit Examination (CAHSEE) to receive a high school diploma. For students who began the 2008-09 school year in grade 12, as evidenced by that school year's October CBEDS enrollment, this table displays by student group the percent who met all state and local graduation requirements for grade 12 completion, including having passed both portions of the CAHSEE or received a local waiver or state exemption.

n/a means that the student group is not numerically significant (less than 10).

Program Improvement

Indicator	School	District
Program Improvement Status	Not in PI	In PI
First Year of Program Improvement Implementation		2009-2010
Year in Program Improvement		Year 1
Number of Schools Currently in Program Improvement		11
Percent of Schools Currently in Program Improvement		21.2%
Detailed information about PI identification can be found at the CDE AYP Web page at http://www.cde.ca.gov/ta/ac/ayl .		

Schools and districts receiving federal Title I funding enter Program Improvement (PI) if they do not make AYP for two consecutive years in the same content area (English-language arts or mathematics) or on the same indicator (API or graduation rate). After entering PI, schools and districts advance to the next level of intervention with each additional year that they do not make AYP.

Textbooks

All of our core textbooks meet State standards and have been adopted by the State Board of Education. Every student is provided a textbook for each of his or her core classes that are current and in good condition.



A list of textbooks and adoption dates is available at:
http://www.sjUSD.org/schools/documentation/downloads/Textbook_listing.pdf



San José Unified School District

855 Lenzen Avenue
 San José, CA 95126
 (408) 535-6000

School Accountability Report Cards

Prepared by

San José Unified School District's Office of Public Engagement

(408) 535-6650

Please refer to this school's full-length SARC report at <http://www.sjUSD.org> for detailed information.