

Summary

Of the
2008-2009
School Accountability
Report Card

Published in 2009-2010

San José Unified School District

Alternative High School

Middle College

Grades 10-12

Dane Caldwell-Holden, Principal

2100 Moorpark Avenue

San Jose, CA 95128

(408) 298-2181 ext 3996

This summary of the School Accountability Report Card (SARC) is intended to provide a quick snapshot of this school.

The data presented are reported for the 2008-2009 school year, except the School Finances that are reported for the 2007-2008 school year.

Please refer to this school's full SARC for a detailed profile of this school and how it compares to the District and to the State.

<http://www.sjUSD.org>

Enrollment and Class Size

| Total Students | 39 |
|----------------------------------|---------|
| African American | 10.26 % |
| American Indian or Alaska Native | % |
| Asian | 5.13 % |
| Filipino | 5.13 % |
| Hispanic or Latino | 20.51 % |
| Pacific Islander | % |
| White (Not Hispanic) | 58.97 % |
| Multiple or No Response | % |
| Socioeconomically disadvantaged | 11.00 % |
| English Learners | % |
| Students with disabilities | % |



| Grade | Enrollment | Subject | Avg. Class Size |
|-------|------------|----------------|-----------------|
| 10 | 1 | English | 9.5 |
| 11 | 21 | Mathematics | |
| 12 | 17 | Science | |
| | | Social Science | 16.5 |

Testing and Accountability

California Standards Test

The California Standards Tests (CST) are a series of tests given to all students to determine how well they are performing in relation to the State content standards.

| Percent of students scoring proficient and above | |
|--|-----|
| English-Language Arts | 76% |
| Mathematics | 17% |
| Science | 0% |
| Social Science | 89% |

Academic Performance Index

The Academic Performance Index (API) is an annual measure of the academic performance and progress of schools in California. API scores range from 20 to 1,000 with a statewide target of 800.

| | |
|------------------------|-----|
| 2009 Growth API | 826 |
| Change from prior year | 160 |
| Met growth target | Yes |
| Statewide rank | 3 |
| Similar schools rank | n/a |

Adequate Yearly Progress

The Federal No Child Left Behind (NCLB) program requires that all schools and districts meet Adequate Yearly Progress (AYP) targets.

| | |
|--|-----|
| Met Overall AYP | No |
| Met English-Language Arts proficiency target | Yes |
| Met Mathematics proficiency target | Yes |
| Met API target | Yes |
| Met Graduation Rate target | No |



Teacher Qualifications

| | |
|---|----------|
| Total teachers at this school | 2 |
| Teachers with full credential | 2 |
| Teachers without full credential | 0 |
| Teachers teaching outside subject areas of competence | 0 |
| Teacher misassignments | 0 |
| Vacant teacher positions | 0 |
| Core classes taught by NCLB compliant teachers | 100.0% |

Expenditures per Pupil and Teacher Salaries

District Averages

- ◆ Expenditures per pupil are \$9,503.
- ◆ Average teacher's salary is \$69,741.

| | | |
|--|----------------|-----------------------------------|
| Expenditures per pupil at this school | \$9,300 | 2.14% lower than District Average |
| Unrestricted (basic) expenditures per pupil | \$7,390 | |
| Restricted (supplemental) expenditures per pupil | \$1,909 | |
| Average teacher's salary at this school | \$63,019 | 9.64% lower than District Average |

Facilities

Results of a facility inspection conducted on 9/4/09 rated this school's condition as **EXEMPLARY.**

Middle College is situated in the Student Service Building and in the Business building.

San Jose Middle College is located on the campus at San Jose City College. This facility was built recently. The teachers and counselors have their own office and two classrooms and a small office/work area that enables the teachers and counselor to monitor and work with students during class time.

Students have use of the library, track, computers, and other facilities on campus.

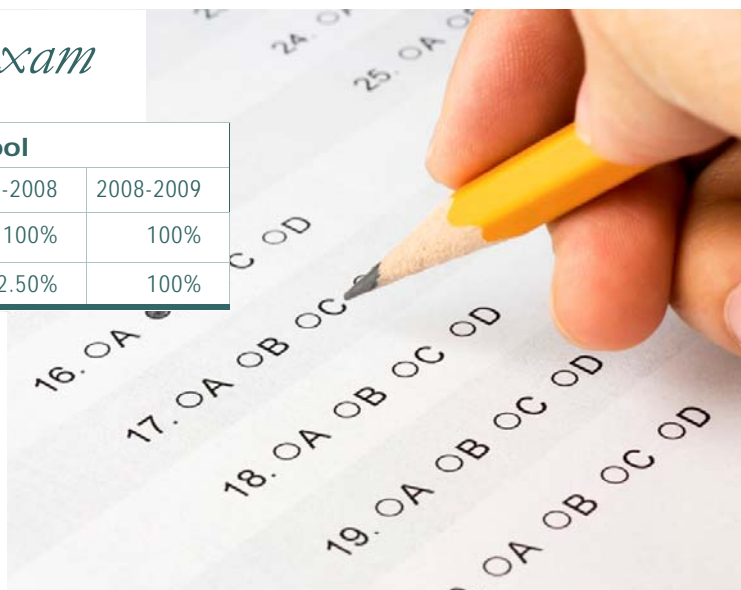
High school text and supplementary books are provided by SJUSD; students taking college classes buy or rent when available. Teacher and Staff Information

California High School Exit Exam

| 3 Year Comparison of Passing Rates at this School | | | |
|---|-----------|-----------|-----------|
| | 2006-2007 | 2007-2008 | 2008-2009 |
| All students English/Language Arts | 87.50% | 100% | 100% |
| All student Mathematics | 66.67% | 62.50% | 100% |

The California High School Exit Examination (CAHSEE) is primarily used as a graduation requirement. However, the grade 10 results of this exam are also used to establish the percentages of students at three proficiency levels (not proficient, proficient, or advanced) in ELA and mathematics in order to compute Adequate Yearly

Progress (AYP) designations as required by the federal NCLB Act of 2001. Detailed information regarding CAHSEE results can be found at the CAHSEE Web site at <http://cahsee.cde.ca.gov/>.



Completion of High School Graduation Requirements

Graduating Class of 2009 at this school

| | |
|----------------------------------|-------|
| All Students | 47.1% |
| African American | n/a |
| American Indian or Alaska Native | n/a |
| Asian | n/a |
| Filipino | n/a |
| Hispanic or Latino | n/a |
| Pacific Islander | n/a |
| White (not Hispanic) | 38.5% |
| Socioeconomically Disadvantaged | n/a |
| English Learners | n/a |
| Students with Disabilities | n/a |

Districtwide completion rate for the graduating class of 2009 was 70%.

Students in California public schools must pass both the English-language arts and mathematics portions of the California High School Exit Examination (CAHSEE) to receive a high school diploma. For students who began the 2008-09 school year in grade 12, as evidenced by that school year's October CBEDS enrollment, this table displays by student group the percent who met all state and local graduation requirements for grade 12 completion, including having passed both portions of the CAHSEE or received a local waiver or state exemption.

n/a means that the student group is not numerically significant (less than 10).

Program Improvement

| Indicator | School | District |
|--|-----------|-----------|
| Program Improvement Status | Not in PI | In PI |
| First Year of Program Improvement Implementation | | 2009-2010 |
| Year in Program Improvement | | Year 1 |
| Number of Schools Currently in Program Improvement | | 11 |
| Percent of Schools Currently in Program Improvement | | 21.2% |
| Detailed information about PI identification can be found at the CDE AYP Web page at http://www.cde.ca.gov/ta/ac/ay/ . | | |

Schools and districts receiving federal Title I funding enter Program Improvement (PI) if they do not make AYP for two consecutive years in the same content area (English-language arts or mathematics) or on the same indicator (API or graduation rate). After entering PI, schools and districts advance to the next level of intervention with each additional year that they do not make AYP.

Textbooks

New textbooks are selected from State approved lists that have been piloted by all grade levels throughout the District. All students have access to textbooks and supplementary text materials for class and/or home use in order to complete assigned projects.

A list of textbooks and adoption dates is available at:

http://www.sjUSD.org/schools/documentation/downloads/Textbook_listing.pdf



San José Unified School District

855 Lenzén Avenue
 San José, CA 95126
 (408) 535-6000

School Accountability Report Cards

Prepared by

San José Unified School District's Office of Public Engagement

(408) 535-6650

Please refer to this school's full-length SARC report at <http://www.sjUSD.org> for detailed information.