

Summary

Of the
2008-2009
School Accountability
Report Card

Published in 2009-2010

San José Unified School District

Alternative High School

Pioneer Plus

Grades 11-12

Dane Caldwell-Holden, Principal

1520 Blossom Hill Road

San Jose, CA 95118

(408) 264-4428

This summary of the School Accountability Report Card (SARC) is intended to provide a quick snapshot of this school.

The data presented are reported for the 2008-2009 school year, except the School Finances that are reported for the 2007-2008 school year.

Please refer to this school's full SARC for a detailed profile of this school and how it compares to the District and to the State.

<http://www.sjUSD.org>

Enrollment and Class Size

Total Students	40
African American	2.50 %
American Indian or Alaska Native	5.00 %
Asian	5.00 %
Filipino	2.50 %
Hispanic or Latino	52.50 %
Pacific Islander	%
White (Not Hispanic)	32.50 %
Multiple or No Response	%
Socioeconomically disadvantaged	36.00 %
English Learners	%
Students with disabilities	18.00 %



Grade	Enrollment	Subject	Avg. Class Size
11	12	English	20.0
12	28		
		Mathematics	11.0
		Science	7.3
		Social Science	11.8

All Plus Schools are limited to an enrollment of 40 students. The Plus Program at Pioneer uses 2 classrooms with a student/teacher ratio of 20:1. The table above shows the number of students by subject area.

Testing and Accountability

California Standards Test

The California Standards Tests (CST) are a series of tests given to all students to determine how well they are performing in relation to the State content standards.

Percent of students scoring proficient and above	
English-Language Arts	18%
Mathematics	6%
Science	0%
Social Science	35%

Academic Performance Index

The Academic Performance Index (API) is an annual measure of the academic performance and progress of schools in California. API scores range from 20 to 1,000 with a statewide target of 800.

2009 Growth API	n/a
Change from prior year	B
<p>B" means this an Alternative Schools Accountability Model (ASAM) school. Schools participating in the ASAM do not receive growth, target information, or statewide or similar schools rankings on this report in recognition of their markedly different educational missions and populations served.</p>	

Adequate Yearly Progress

The Federal No Child Left Behind (NCLB) program requires that all schools and districts meet Adequate Yearly Progress (AYP) targets.

Met Overall AYP	Yes
Met English-Language Arts proficiency target	Yes
Met Mathematics proficiency target	Yes
Met API target of 620	Yes
Met Graduation Rate target	Yes



Teacher Qualifications

Total teachers at this school	2
Teachers with full credential	2
Teachers without full credential	0
Teachers teaching outside subject areas of competence	0
Teacher misassignments	0
Vacant teacher positions	0
Core classes taught by NCLB compliant teachers	100.0%

Expenditures per Pupil and Teacher Salaries

District Averages

- ◆ Expenditures per pupil are \$9,503.
- ◆ Average teacher's salary is \$69,741.

Expenditures per pupil at this school	\$9,505	0.02% higher than District Average
Unrestricted (basic) expenditures per pupil	\$7,584	
Restricted (supplemental) expenditures per pupil	\$1,922	
Average teacher's salary at this school	\$72,838	4.44% higher than District Average

Results of a facility inspection conducted on 7/29/09 rated this school's condition as **GOOD.**

Facilities

Pioneer Plus has 2 classrooms on the Pioneer High School Campus. Pioneer's 49-year-old buildings were completely refurbished through the Facilities Bond passed by citizens seven years ago. The school has been painted inside and out, new roofs for all buildings were installed, rewiring of the plant was among the first work completed, air and heating units were installed in all classrooms and offices. Construction is complete that aligns with the bond initiative, Measure F, passed in the 2002 election. The renovations and upgrades of all science rooms are complete. The rooms opened in January 2006. Each classroom is wired for additional technology

and will be arranged in a manner that is conducive to the individual science labs that will be taught in the classroom. Additional sinks and workstations are added. All safety issues are addressed.

In addition, there is extensive repair of the concrete work between buildings, surrounding the quad areas. Drainage is improved to alleviate the flooding that occurs when it rains. Landscaping of the quad area and the front of the school is complete. The cafeteria/multi-purpose room/performing arts center is enlarged and renovation is complete and reopened in December 2005.

The first phase of the sports facility was completed in December of 2004 and included an all weather track, a synthetic football/soccer field, new visitor bleachers, a new sound system, new scoreboards, and new fencing.

The second phase of the field renovations is scheduled for 2005-2007 is complete and includes all playing fields and surrounding areas.

Our cafeteria is now a completely remodeled food court with a completely renovated kitchen area.

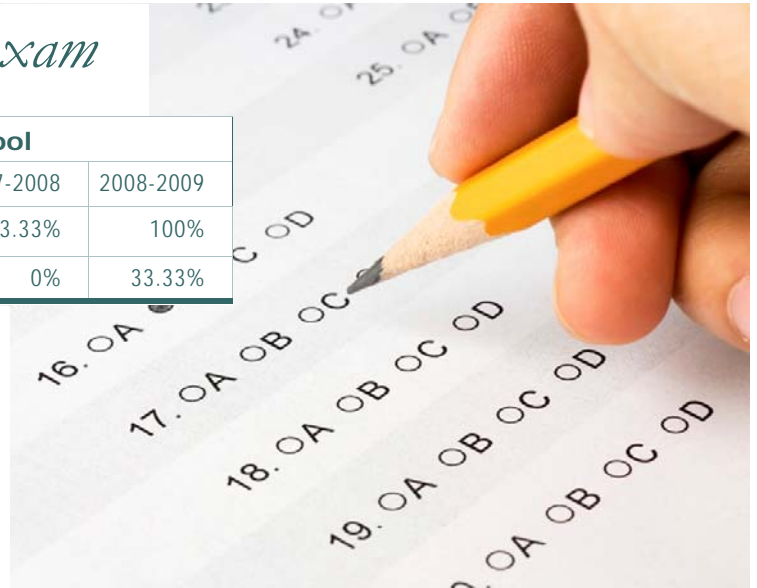
New carpeting is installed in our portable classrooms.

California High School Exit Exam

3 Year Comparison of Passing Rates at this School			
	2006-2007	2007-2008	2008-2009
All students English/Language Arts	100%	83.33%	100%
All student Mathematics	85.71%	0%	33.33%

The California High School Exit Examination (CAHSEE) is primarily used as a graduation requirement. However, the grade 10 results of this exam are also used to establish the percentages of students at three proficiency levels (not proficient, proficient, or advanced) in ELA and mathematics in order to compute Adequate Yearly

Progress (AYP) designations as required by the federal NCLB Act of 2001. Detailed information regarding CAHSEE results can be found at the CAHSEE Web site at <http://cahsee.cde.ca.gov/>.



Completion of High School Graduation Requirements

Graduating Class of 2009 at this school

All Students	82.1%
African American	n/a
American Indian or Alaska Native	n/a
Asian	n/a
Filipino	n/a
Hispanic or Latino	92.9%
Pacific Islander	n/a
White (not Hispanic)	n/a
Socioeconomically Disadvantaged	n/a
English Learners	n/a
Students with Disabilities	n/a

Districtwide completion rate for the graduating class of 2009 was 70%.

Students in California public schools must pass both the English-language arts and mathematics portions of the California High School Exit Examination (CAHSEE) to receive a high school diploma. For students who began the 2008-09 school year in grade 12, as evidenced by that school year's October CBEDS enrollment, this table displays by student group the percent who met all state and local graduation requirements for grade 12 completion, including having passed both portions of the CAHSEE or received a local waiver or state exemption.

n/a means that the student group is not numerically significant (less than 10).

Program Improvement

Indicator	School	District
Program Improvement Status	Not in PI	In PI
First Year of Program Improvement Implementation		2009-2010
Year in Program Improvement		Year 1
Number of Schools Currently in Program Improvement		11
Percent of Schools Currently in Program Improvement		21.2%
Detailed information about PI identification can be found at the CDE AYP Web page at http://www.cde.ca.gov/ta/ac/ay/ .		

Schools and districts receiving federal Title I funding enter Program Improvement (PI) if they do not make AYP for two consecutive years in the same content area (English-language arts or mathematics) or on the same indicator (API or graduation rate). After entering PI, schools and districts advance to the next level of intervention with each additional year that they do not make AYP.

Textbooks

New textbooks are selected from State approved lists that have been piloted by all grade levels throughout the District. All students have access to textbooks and supplementary text materials for class and/or home use in order to complete assigned projects.

A list of textbooks and adoption dates is available at:
http://www.sjUSD.org/schools/documentation/downloads/Textbook_listing.pdf



San José Unified School District

855 Lenzén Avenue
 San José, CA 95126
 (408) 535-6000

*School Accountability Report Cards
 Prepared by*

*San José Unified School District's Office of Public Engagement
 (408) 535-6650*

Please refer to this school's full-length SARC report at <http://www.sjUSD.org> for detailed information.