

# Summary

Of the  
**2008-2009**  
**School Accountability**  
**Report Card**

Published in 2009-2010

San José Unified School District

# Pioneer

**Grades 9-12**  
**Susan Walker, Principal**  
 1290 Blossom Hill Road  
 San José, CA 95118  
 (408) 535-6310

This summary of the School Accountability Report Card (SARC) is intended to provide a quick snapshot of this school.

The data presented are reported for the 2008-2009 school year, except the School Finances that are reported for the 2007-2008 school year.

Please refer to this school's full SARC for a detailed profile of this school and how it compares to the District and to the State.

<http://www.sjUSD.org>

## Enrollment and Class Size

Total Students	1,538
African American	2.99 %
American Indian or Alaska Native	1.56 %
Asian	13.00 %
Filipino	2.86 %
Hispanic or Latino	29.45 %
Pacific Islander	0.65 %
White (Not Hispanic)	48.83 %
Multiple or No Response	0.65 %
Socioeconomically disadvantaged	22.00 %
English Learners	8.00 %
Students with disabilities	10.00 %



Grade	Enrollment	Subject	Avg. Class Size
9	414		
10	406	English	26.6
11	364	Mathematics	28.8
12	354	Science	19.7
		Social Science	29.4

## Testing and Accountability

### California Standards Test

The California Standards Tests (CST) are a series of tests given to all students to determine how well they are performing in relation to the State content standards.

Percent of students scoring proficient and above	
English-Language Arts	68%
Mathematics	43%
Science	69%
Social Science	67%

### Academic Performance Index

The Academic Performance Index (API) is an annual measure of the academic performance and progress of schools in California. API scores range from 20 to 1,000 with a statewide target of 800.

2009 Growth API	829
Change from prior year	20
Met growth target	Yes
Statewide rank	9
Similar schools rank	9

### Adequate Yearly Progress

The Federal No Child Left Behind (NCLB) program requires that all schools and districts meet Adequate Yearly Progress (AYP) targets.

Met Overall AYP	Yes
Met English-Language Arts proficiency target	Yes
Met Mathematics proficiency target	Yes
Met API target of 620	Yes
Met Graduation Rate target	Yes

## Teacher Qualifications



<b>Total teachers at this school</b>	<b>70</b>
Teachers with full credential	66
Teachers without full credential	4
Teachers teaching outside subject areas of competence	0
Teacher misassignments	0
Vacant teacher positions	0
Core classes taught by NCLB compliant teachers	98.4%

## Expenditures per Pupil and Teacher Salaries

<b>Expenditures per pupil at this school</b>	<b>\$8,881</b>	6.55% lower than District Average
Unrestricted (basic) expenditures per pupil	\$5,427	
Restricted (supplemental) expenditures per pupil	\$3,454	
Average teacher's salary at this school	\$65,737	5.74% lower than District Average

### District Averages

- ◆ Expenditures per pupil are \$9,503.
- ◆ Average teacher's salary is \$69,741.

Results of a facility inspection conducted on 7/29/09 rated this school's condition as **GOOD.**

## Facilities

Pioneer's 49-year-old buildings were completely refurbished through the Facilities Bond passed by citizens seven years ago. The school has been painted inside and out, new roofs for all buildings were installed, rewiring of the plant was among the first work completed, air and heating units were installed in all classrooms and offices.

Construction is complete that aligns with the bond initiative, Measure F, passed in the 2002 election. The renovations and upgrades of all science rooms are complete. The rooms opened in January 2006. Each classroom is wired for additional technology and will be arranged in a manner that is conducive to the individual science labs that will be taught in the classroom. Additional sinks and workstations are added. All safety issues are addressed.

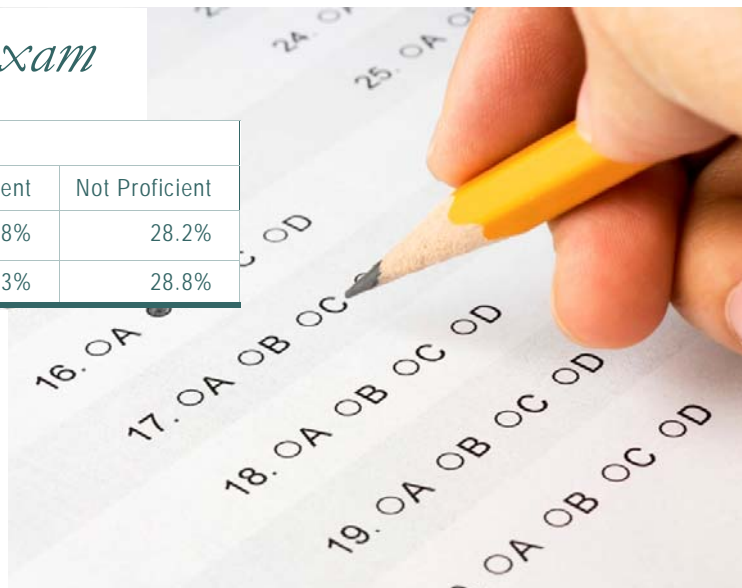
In addition, there is extensive repair of the concrete work between buildings, surrounding the buildings and throughout the quad areas. Drainage is improved to alleviate the flooding that occurs when it rains. Landscaping of the quad area and the front of the school is complete. The cafeteria/multi-purpose room/performing arts center is enlarged and renovation is complete and reopened in December 2005.

## California High School Exit Exam

2008-2009 Grade 10 results			
	Advanced	Proficient	Not Proficient
All students English/Language Arts	42.0%	29.8%	28.2%
All student Mathematics	33.9%	37.3%	28.8%

The California High School Exit Examination (CAHSEE) is primarily used as a graduation requirement. However, the grade 10 results of this exam are also used to establish the percentages of students at three proficiency levels (not proficient, proficient, or advanced) in ELA and mathematics in order to compute Adequate Yearly

Progress (AYP) designations as required by the federal NCLB Act of 2001. Detailed information regarding CAHSEE results can be found at the CAHSEE Web site at <http://cahsee.cde.ca.gov/>.



## Completion of High School Graduation Requirements

### Graduating Class of 2009 at this school

All Students	92.7%
African American	86.7%
American Indian or Alaska Native	n/a
Asian	94.2%
Filipino	93.3%
Hispanic or Latino	82.8%
Pacific Islander	n/a
White (not Hispanic)	97.7%
Socioeconomically Disadvantaged	85.5%
English Learners	63.6%
Students with Disabilities	76.9%

Districtwide completion rate for the graduating class of 2009 was 70%.

Students in California public schools must pass both the English-language arts and mathematics portions of the California High School Exit Examination (CAHSEE) to receive a high school diploma. For students who began the 2008-09 school year in grade 12, as evidenced by that school year's October CBEDS enrollment, this table displays by student group the percent who met all state and local graduation requirements for grade 12 completion, including having passed both portions of the CAHSEE or received a local waiver or state exemption.

*n/a means that the student group is not numerically significant (less than 10).*

## Program Improvement

Indicator	School	District
Program Improvement Status	Not in PI	In PI
First Year of Program Improvement Implementation		2009-2010
Year in Program Improvement		Year 1
Number of Schools Currently in Program Improvement		11
Percent of Schools Currently in Program Improvement		21.2%
Detailed information about PI identification can be found at the CDE AYP Web page at <a href="http://www.cde.ca.gov/ta/ac/ay/">http://www.cde.ca.gov/ta/ac/ay/</a> .		

Schools and districts receiving federal Title I funding enter Program Improvement (PI) if they do not make AYP for two consecutive years in the same content area (English-language arts or mathematics) or on the same indicator (API or graduation rate). After entering PI, schools and districts advance to the next level of intervention with each additional year that they do not make AYP.

## Textbooks

Pioneer's textbooks are all California State adopted texts that align with the state curriculum and framework. Most classes have sets of books for the students to take home. Some classes use class sets at school and provide ancillary materials to support homework. All of our students have access to textbooks and all instructional materials



A list of textbooks and adoption dates is available at:

[http://www.sjUSD.org/schools/documentation/downloads/Textbook\\_listing.pdf](http://www.sjUSD.org/schools/documentation/downloads/Textbook_listing.pdf)



*San José Unified School District*

855 Lenzon Avenue  
 San José, CA 95126  
 (408) 535-6000

*School Accountability Report Cards*

*Prepared by*

*San José Unified School District's Office of Public Engagement*

*(408) 535-6650*

Please refer to this school's full-length SARC report at <http://www.sjUSD.org> for detailed information.