

Summary

San José Unified School District

Of the
2008-2009
School Accountability
Report Card

Willow Glen High

Grades 9-12
Shannon McGee, Principal
 2001 Cottle Avenue
 San José, CA 95124
 (408) 535-6330

Published in 2009-2010

This summary of the School Accountability Report Card (SARC) is intended to provide a quick snapshot of this school.

The data presented are reported for the 2008-2009 school year, except the School Finances that are reported for the 2007-2008 school year.

Please refer to this school's full SARC for a detailed profile of this school and how it compares to the District and to the State.

<http://www.sjUSD.org>

Enrollment and Class Size

Total Students	1,465
African American	3.21 %
American Indian or Alaska Native	0.89 %
Asian	4.71 %
Filipino	1.98 %
Hispanic or Latino	57.68 %
Pacific Islander	0.61 %
White (Not Hispanic)	30.31 %
Multiple or No Response	0.61 %
Socioeconomically disadvantaged	43.00 %
English Learners	23.00 %
Students with disabilities	10.00 %



Grade	Enrollment	Subject	Avg. Class Size
9	407		
10	400	English	15.9
11	351	Mathematics	16.5
12	307	Science	18.5
		Social Science	17.3

Testing and Accountability

California Standards Test

The California Standards Tests (CST) are a series of tests given to all students to determine how well they are performing in relation to the State content standards.

Percent of students scoring proficient and above	
English-Language Arts	45%
Mathematics	26%
Science	47%
Social Science	50%

Academic Performance Index

The Academic Performance Index (API) is an annual measure of the academic performance and progress of schools in California. API scores range from 20 to 1,000 with a statewide target of 800.

2009 Growth API	718
Change from prior year	13
Met growth target	Yes
Statewide rank	5
Similar schools rank	5

Annual Yearly Progress

The Federal No Child Left Behind (NCLB) program requires that all schools and districts meet Adequate Yearly Progress (AYP) targets.

Met Overall AYP	No
Met English Language Arts proficiency target	No
Met Mathematics proficiency target	No
Met API target of 620	Yes
Met Graduation Rate target	Yes



Teacher Qualifications

Total teachers at this school	63
Teachers with full credential	58
Teachers without full credential	5
Teachers teaching outside subject areas of competence	0
Teacher misassignments	0
Vacant teacher positions	0
Core classes taught by NCLB compliant teachers	100.0%

Expenditures per Pupil and Teacher Salaries

District Averages

- ◆ Expenditures per pupil are \$9,503.
- ◆ Average teacher's salary is \$69,741.

Expenditures per pupil at this school	\$9,562	0.62% higher than District Average
Unrestricted (basic) expenditures per pupil	\$5,304	
Restricted (supplemental) expenditures per pupil	\$4,257	
Average teacher's salary at this school	\$66,288	4.95% lower than District Average

Results of a facility inspection conducted on 9/5/09 rated this school's condition as **GOOD.**

Facilities

Willow Glen High School is a fifty-year-old community landmark rich in history and tradition. 2001-2002 facility projects included new heating and air conditioning, new roofing, adding some additional buildings and fresh interior and exterior paint on the existing buildings. The campus is in the second phase of renovation that will add new capital improvements, landscaping upgrades and technological up-

dates over the next few years. The new track and football field opened in fall 2004. A school beautification day for staff, students, parents, and community is held twice yearly. Bathroom renovations were completed at the close of 2005. New windows throughout the school as well as new sports fields, softball and baseball diamonds, and P.E. locker rooms will be completed in early 2007. The 2007-2008 school year saw the opening of

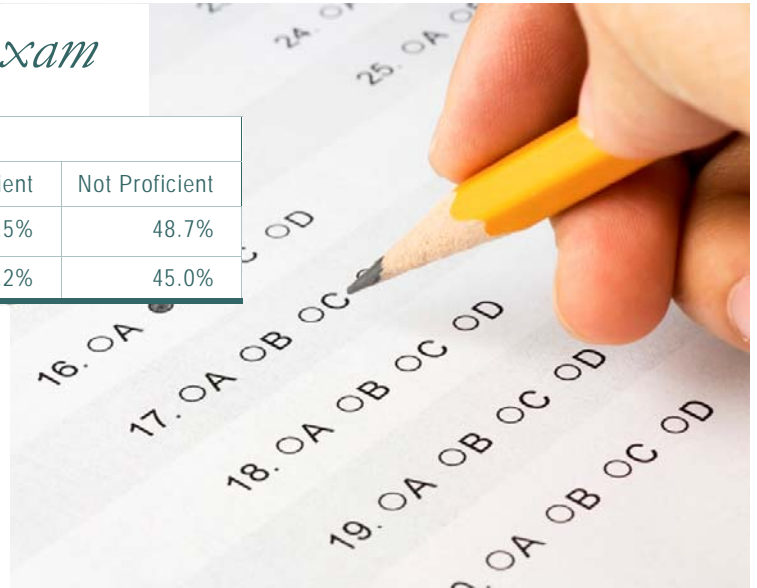
the Mickey Long Community Center, which houses two high school classrooms, one middle school classroom, an art gallery, and kitchen and conference room. The 2008-2009 school saw the renovations of the W wing, former shop and audio classes, in a variety of areas creating state of the art classrooms. The Fall 2010 will be the opening of the new Science wing at Willow Glen High School.

California High School Exit Exam

2008-2009 Grade 10 results			
	Advanced	Proficient	Not Proficient
All students English/Language Arts	26.8%	24.5%	48.7%
All student Mathematics	20.8%	34.2%	45.0%

The California High School Exit Examination (CAHSEE) is primarily used as a graduation requirement. However, the grade 10 results of this exam are also used to establish the percentages of students at three proficiency levels (not proficient, proficient, or advanced) in ELA and mathematics in order to compute Adequate Yearly

Progress (AYP) designations as required by the federal NCLB Act of 2001. Detailed information regarding CAHSEE results can be found at the CAHSEE Web site at <http://cahsee.cde.ca.gov/>.



Completion of High School Graduation Requirements

Graduating Class of 2009 at this school

All Students	71.4%
African American	54.5%
American Indian or Alaska Native	n/a
Asian	100.0%
Filipino	n/a
Hispanic or Latino	63.2%
Pacific Islander	n/a
White (not Hispanic)	85.0%
Socioeconomically Disadvantaged	63.1%
English Learners	31.5%
Students with Disabilities	42.1%

Districtwide completion rate for the graduating class of 2009 was 70%.

Students in California public schools must pass both the English-language arts and mathematics portions of the California High School Exit Examination (CAHSEE) to receive a high school diploma. For students who began the 2008-09 school year in grade 12, as evidenced by that school year's October CBEDS enrollment, this table displays by student group the percent who met all state and local graduation requirements for grade 12 completion, including having passed both portions of the CAHSEE or received a local waiver or state exemption.

n/a means that the student group is not numerically significant (less than 10).

Program Improvement

Indicator	School	District
Program Improvement Status	Not in PI	In PI
First Year of Program Improvement Implementation		2009-2010
Year in Program Improvement		Year 1
Number of Schools Currently in Program Improvement		11
Percent of Schools Currently in Program Improvement		21.2%
Detailed information about PI identification can be found at the CDE AYP Web page at http://www.cde.ca.gov/ta/ac/ayl .		

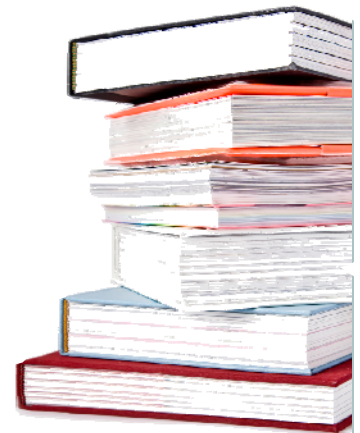
Schools and districts receiving federal Title I funding enter Program Improvement (PI) if they do not make AYP for two consecutive years in the same content area (English-language arts or mathematics) or on the same indicator (API or graduation rate). After entering PI, schools and districts advance to the next level of intervention with each additional year that they do not make AYP.

Textbooks

Textbooks are updated and purchased according to State adoption criteria and guidelines. We make every effort to insure that there are sufficient textbooks and materials for every student.

In addition, some subjects even have class sets of books for those students who neglect to bring them to class. Our textbook inventory is regularly checked to insure that damaged and lost

books are replaced in a timely manner. In addition, a complete inventory is done at the end of the year to assess all texts and materials. At this time, replacement texts have been ordered to insure adequate numbers of materials in the fall.



A list of textbooks and adoption dates is available at:

http://www.sjUSD.org/schools/documentation/downloads/Textbook_listing.pdf



San José Unified School District

855 Lenzen Avenue
San José, CA 95126
(408) 535-6000

School Accountability Report Cards

Prepared by

San José Unified School District's Office of Public Engagement

(408) 535-6650

Please refer to this school's full-length SARC report at <http://www.sjUSD.org> for detailed information.